 Laura S. Guy, PhD, ABPP

AETAP, 21 April 2016, Ghent

**DEVELOPMENTAL CONSIDERATIONS FOR
THREAT ASSESSMENT WITH YOUTH**

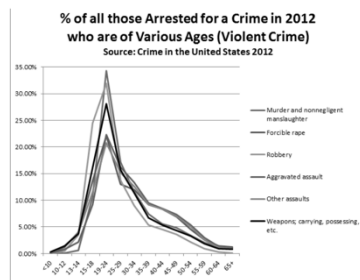
Outline

- Developmental concepts
 - Brain, cognitive, psychosocial
- Implications for TAM

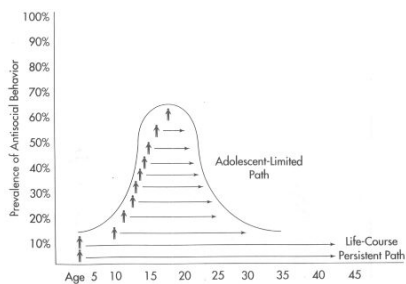
Developmental Considerations

Offending in Adolescence

Age-Crime Curve



Trajectory (Moffitt, 2003)

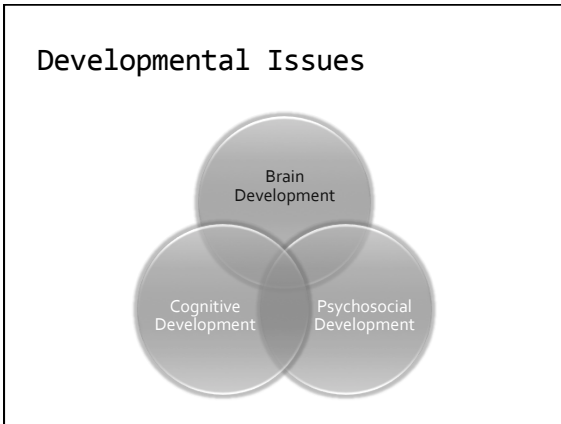


Defining Adolescence

Defining Adolescence

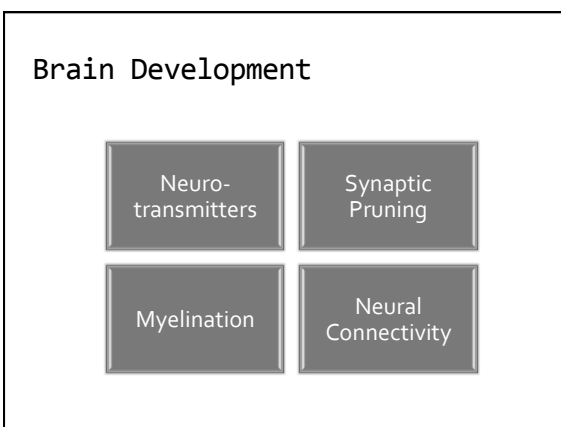
- Starts with biology, ends with culture and social roles
- Used to take about 5 years
- Now, spans ~10-25 years of age

Key Developmental Issues



The Brain

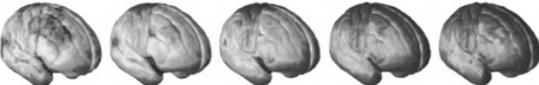
- Adult size by ~age 10
- ~3 pounds
- Neurons "talk" via electrical impulses
- ~100 billion neurons
- Up to ~ 250 mph



Cortical Development

MASSACHUSETTS GENERAL HOSPITAL
CENTER FOR LAW, BRAIN & BEHAVIOR

Dynamic mapping of human cortical development



Age 5 Adolescence Age 20

Source: "Dynamic mapping of human cortical development during childhood through early adulthood." Nitin Gogtay et al., Proceedings of the National Academy of Sciences, May 25, 2004; California Institute of Technology.

Regions of higher level brain functioning finish developing later than regions of basic brain functioning

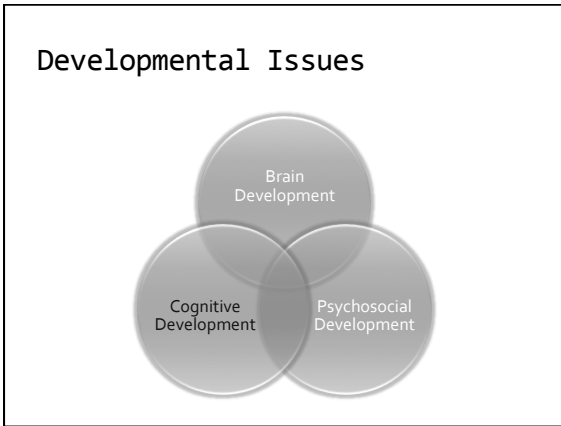
Three Key Developments (Steinberg, 2014)

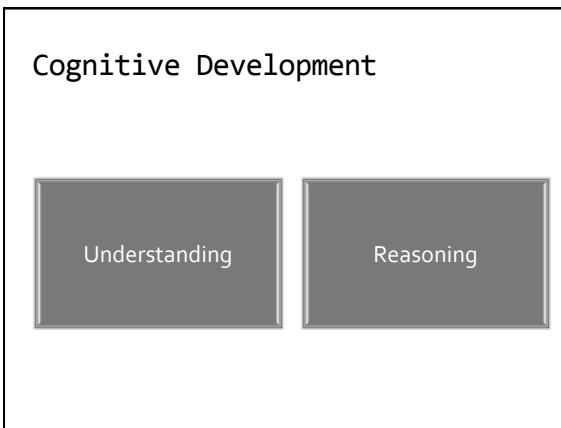
- Starting the engines
- Developing the breaks
- Putting a skilled driver behind the wheel

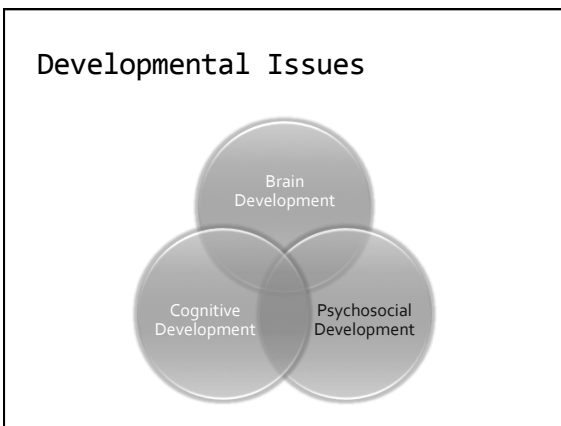
Dual System Model (Steinberg, 2008)

Reward Seeking	Self Regulation & Impulse Control
▪ Rapid increase dopaminergic activity within socioemotional system	▪ Structural maturation of cognitive control system and connections to socioemotional system

Temporal gap between the increase in sensation seeking at puberty and later development of mature self-regulatory competence may make adolescence a time of inherently immature judgment







Psychosocial Development

Psychosocial Development

Future orientation	Reward Sensitivity
Self-regulation	Peer Influence

Dangers of Friends

- Crime
 - Juvenile are significantly more likely to commit crimes in groups than are adult
- And other perils
 - Having same-age passengers in the car substantially increases the risk of a teen driver's crashing but has no similar impact for adult drivers

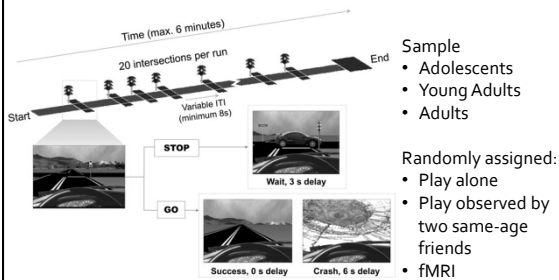
How are Peers Influential?

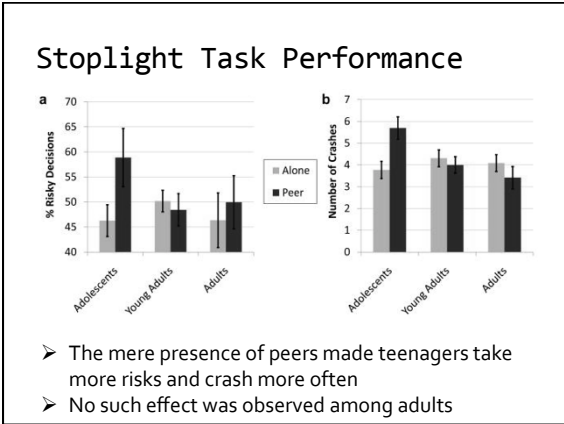
- Direct
 - Peer pressure, explicit encouragement to behave recklessly
- Indirect
 - More likely to surround themselves with like-minded others
 - Aim to impress peers

Peers

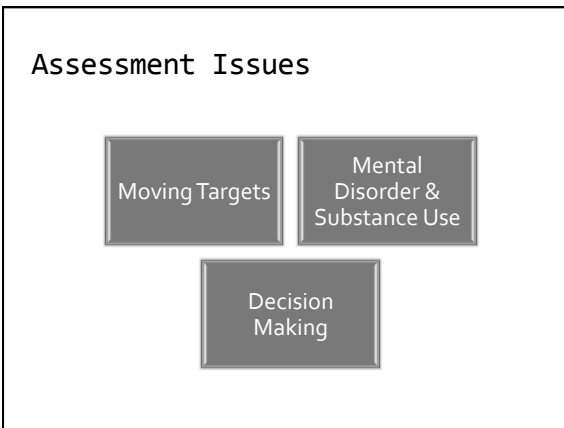
- It's more than just peer influence
- Friends give adolescents a "dopamine squirt"
- More sensitive to rewards, including rewards of risky behavior

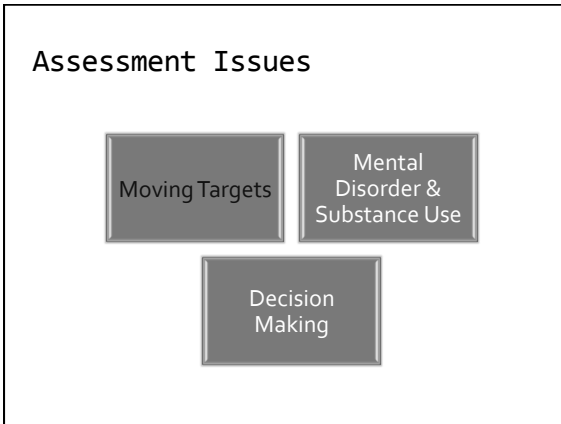
Chein et al. (2012)

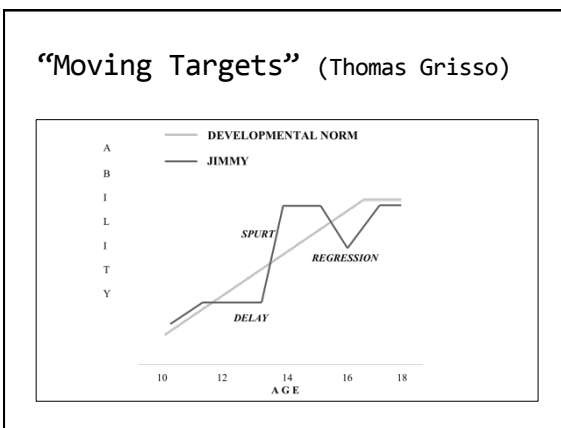


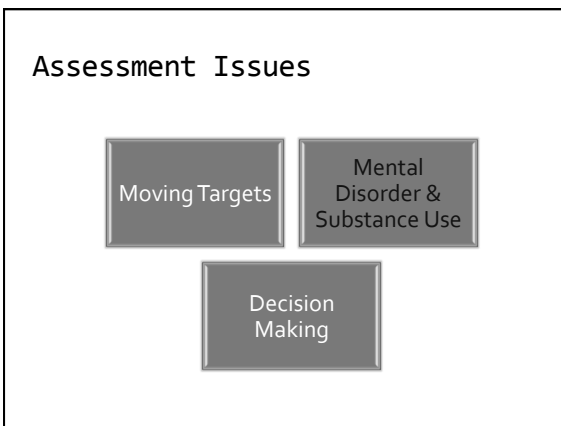


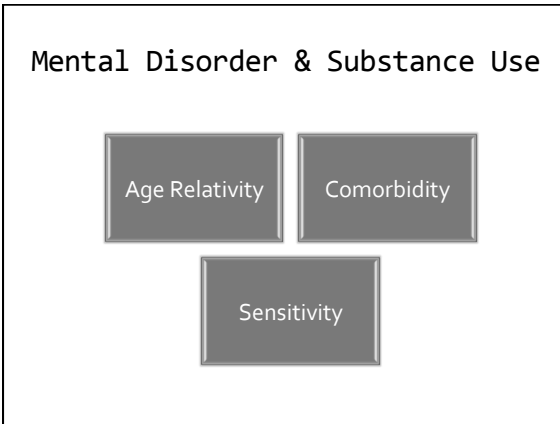
Implications for TAM

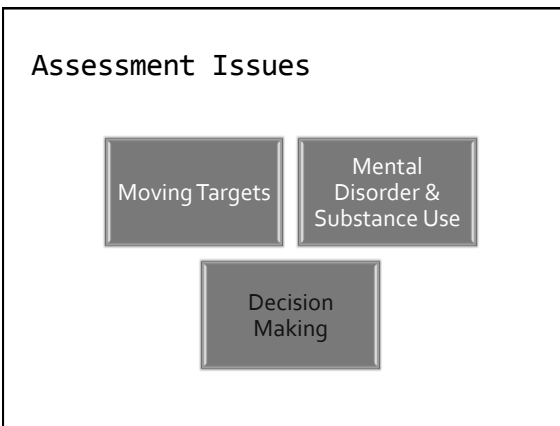


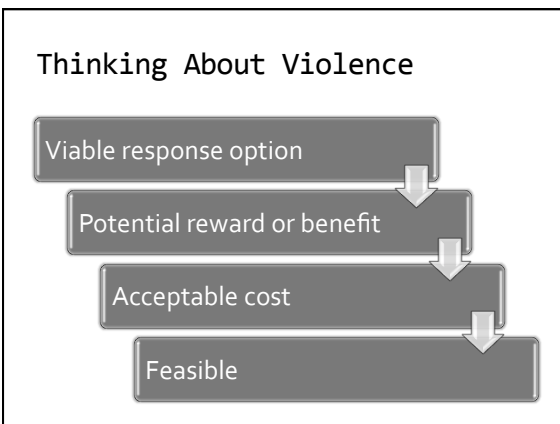










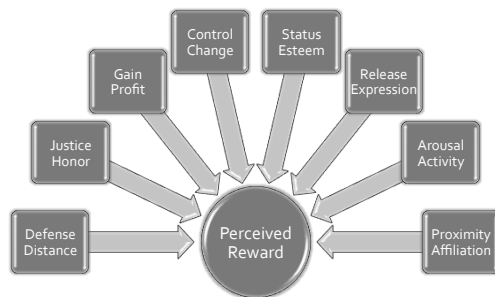


Nature of Risk Factors

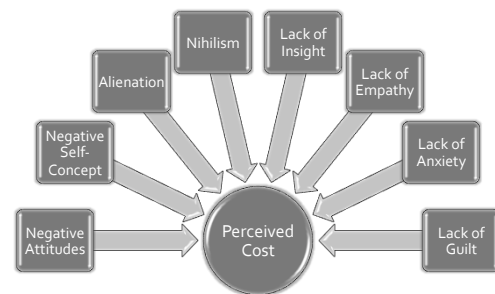
- Risk factors influence decisions

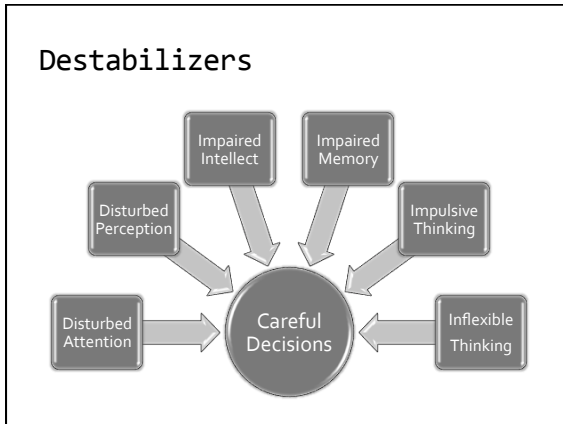


Motivators



Disinhibitors





Contact

Laura.Guy@protect-international.com
